



**Silkton Corporation**  
Shipping Company

**SILKTON CORPORATION**  
Paseo del Mar y Boulevard Costa del Este,  
Edificio Capital Plaza, Piso 6, Oficina 601  
Panamá, República de Panamá.  
**Tel:** +507 830.5000  
**Fax:** +507 830.5007

## M/V PACIFIC CLIPPER

[www.silkton.com](http://www.silkton.com)



### SHIP'S PARTICULARS

SHIP'S NAME	PACIFIC CLIPPER
CALL SIGN	H3FL
IMO N°	7519945
PORT OF REGISTER	PANAMA
FLAG	PANAMA
SHIP'S TYPE	GENERAL CARGO
ISPS CERTIFICATE N°	200404608
ISPS CERTIFICATE ISSUED BY	PANAMA MARITIME AUTHORITY
OFFICIAL NUMBER	2883-PEXT-1
OWNER	PACIFIC CLIPPER COMPANY S.A.
MMSI N°	3,53E+08
CLASSIFICATION SOCIETY	INTERNATIONAL MARITIME BUREAU, INC.
LR NUMBER	7519945
BUILT BY & DATE	MIHO ZOSENSHO SHIPYARD - JAPAN / 1977
N° OF BUILT	1052
MANAGER / OPERATOR	SILKTON CORPORATION

**E-MAIL INMARSAT-C** 435309010@inmc.eik.com  
435309011@inmc.eik.com  
**MINI M MAIL** pacificclipper@shippingradio.bjles.net  
**MINI M MAIL voz** + 870 7638.36885

### SHIP'S DIMENSIONS & TONNAGES

LENGTH OVERALL (LOA)	80,25 M
LBP	74.60 M
BREADTH (MOULDED)	16,04 M
DEPTH MOULDED TO 1st DECK	10.50 M
SUMMER LOAD DRAUGHT	8.48 M
TROPICAL/FRESH LOAD DRAUGHT	8.65 M
WINTER LOAD DRAUGHT	8.304 M
TPC	10.09 T/cm
GROSS TONNAGE	3403 RT
NETT TONNAGE	2240 RT
DISPLACEMENT	7230 MT
DEADWEIGHT	6150 MT
LIGHT SHIP WEIGHT	1080 MT
AIR DRAUGHT (FROM KEEL)	30.5 M

### SHIP'S DECK CRANE

CRANE OUT REACH	4 MTS AT 79°
CRANE OUT REACH	19 MTS AT 25°
CRANE CYCLE 360°	45 SECONDS
BOOM TIME FM 25° TO 79°	40 SECONDS
HOOK HOISTING SPEED	30 M/MIN (FULL LOAD) 60 M/MIN (50% LOAD)
S.W.L. CRANES	2 X 8 MT



### SHIP'S CAPACITIES

<b>RESISTENCE</b>	
HATCHES / TANKTOP	HATCHES 1,5 TONS/M2 - TANK TOP 15 TON/M2
BALLAST CAPACITY	1287.40 M/T
FRESH WATER CAPACITY	88 MT

HOLD N°	VOLUME CBM/CFT (GRAIN)	BALE CBM / CFT
HOLD 1	7373 CBM / 260294 CFT	7271CBM / 256664 CFT
TOTAL	7373 CBM / 260294 CFT	7271 CBM / 256664 CFT

DIESEL OIL CAPACITY	DO 350 CBM
MAIN ENGINES OUTPUT	HANSHIN NAINENKI KOGYO – JAPAN /1 X 3000 HP
MAIN ENGINES TYPE	HANSHIN 6LUS 40 / MOTOR DIESEL / 6 CYLINDERS
SPEED	8.0 KNOTS LOADED / 6 mt MGO/day / Sea Calm 1





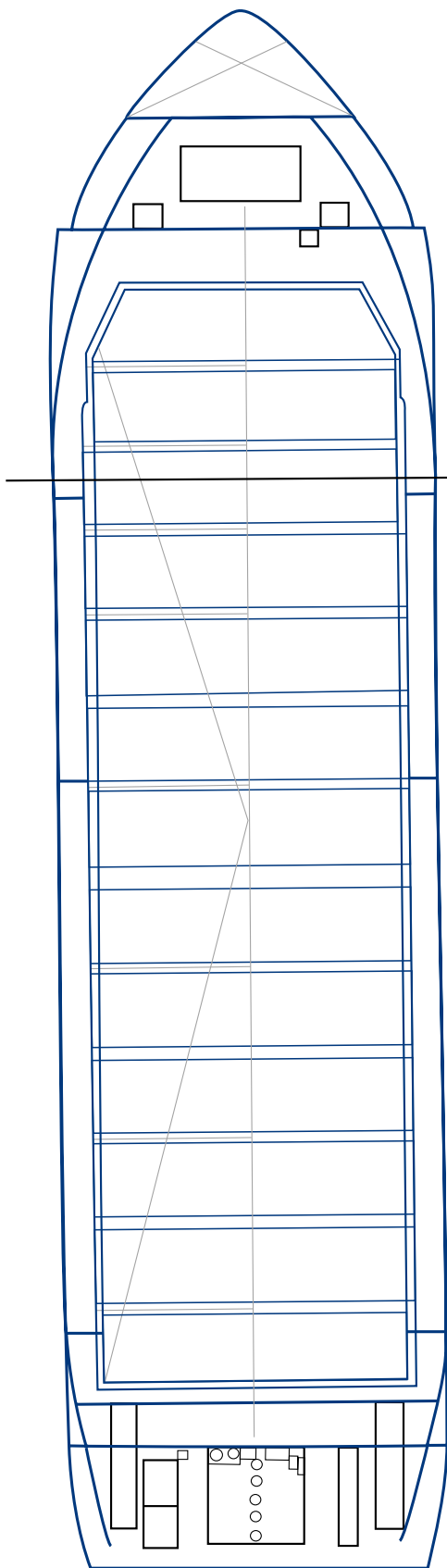
**Silkton Corporation**  
Shipping Company

**SILKTON CORPORATION**

Paseo del Mar y Boulevard Costa del Este, Edificio Capital Plaza, Piso 6, Oficina 601  
Panamá, República de Panamá. Telf: +507.830.5000 Fax: +507.830.5007

**M/V PACIFIC CLIPPER**

2ND DECK



HOLD PLAN

